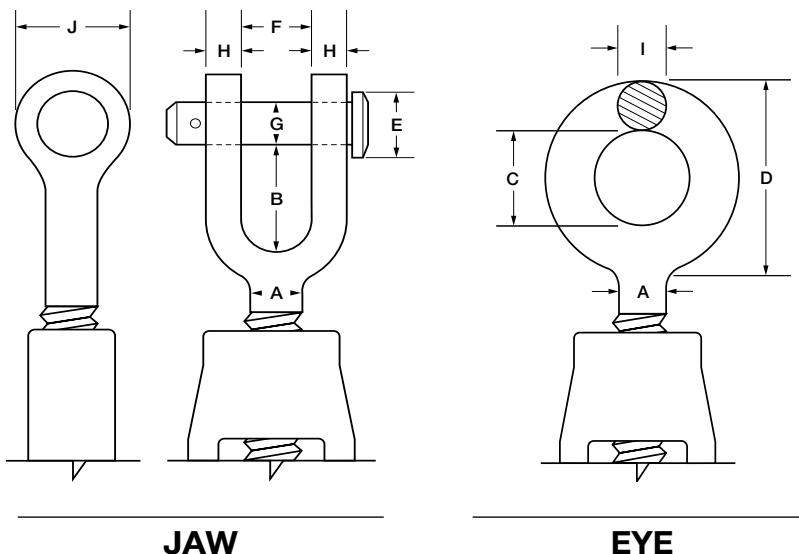


# TURNBUCKLE ASSEMBLIES

**Material:** C-1030  
**Threads:** U.N.C. Class 2A, Right or Left Hand  
**Finish:** Galvanized



## ASSEMBLY: JAW & JAW



Part No.	Turnbuckle		Jaw					Overall Closed Length	Rated Capacity (Lbs.)	Unit Weight (Lbs.)
	Thd. Dia. A	Take Up T	F	B	G	H	J			
TBJJ004	1/4	X 4	7/16	5/8	1/4	7/32	5/8	8	500	0.28
TBJJ005	5/16	X 4 1/2	1/2	3/4	1/4	1/4	11/16	9	800	0.49
TBJJ006	3/8	X 6	9/16	13/16	5/16	5/16	13/16	12	1200	0.85
TBJJ008	1/2	X 6	5/8	1	7/16	3/8	1	13	2100	1.64
TBJJ008-2	1/2	X 9	5/8	1	7/16	3/8	1	16	2100	1.95
TBJJ008-3	1/2	X 12	5/8	1	7/16	3/8	1	19	2100	2.40
TBJJ010	5/8	X 6	3/4	1 5/16	1/2	7/16	1 5/16	16	3200	2.75
TBJJ010-2	5/8	X 9	3/4	1 5/16	1/2	7/16	1 5/16	19	3200	3.25
TBJJ010-3	5/8	X 12	3/4	1 5/16	1/2	7/16	1 5/16	22	3200	4.00
TBJJ012	3/4	X 6	15/16	1 1/2	5/8	7/16	1 5/8	17	5000	4.50
TBJJ012-2	3/4	X 9	15/16	1 1/2	5/8	7/16	1 5/8	20	5000	4.98
TBJJ012-3	3/4	X 12	15/16	1 1/2	5/8	7/16	1 5/8	23	5000	5.78
TBJJ014	7/8	X 12	1 1/16	1 3/4	3/4	1/2	1 3/4	25	7000	8.75
TBJJ100	1	X 6	1 3/16	2	1	5/8	2 1/8	18	10000	9.20
TBJJ100-2	1	X 12	1 3/16	2	1	5/8	2 1/8	24	10000	12.10

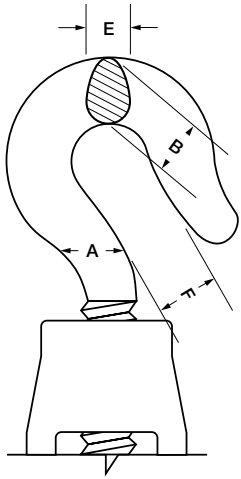
## ASSEMBLY: JAW & EYE



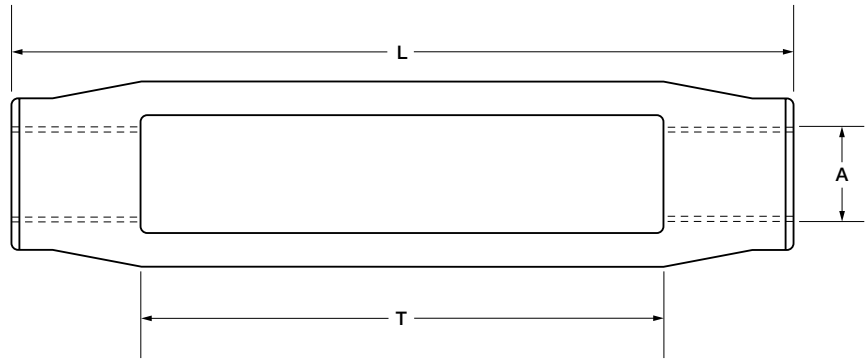
Part No.	Turnbuckle		Eye			Jaw					Overall Closed Length	Rated Capacity (Lbs.)	Unit Weight (Lbs.)
	Thread Dia. A	Take Up T	C	D	I	F	B	G	H	J			
TBEJ004	1/4	x 4	1/2	1	1/4	7/16	5/8	1/4	7/32	5/8	8	500	0.26
TBEJ005	5/16	x 4 1/2	5/8	1 1/4	5/16	1/2	3/4	1/4	1/4	11/16	9	800	0.45
TBEJ006	3/8	x 6	3/4	1 1/2	3/8	9/16	13/16	5/16	5/16	13/16	12	1200	0.78
TBEJ008	1/2	x 6	1	1 15/16	7/16	5/8	1	7/16	3/8	1	13	2100	1.51
TBEJ008-2	1/2	x 9	1	1 15/16	7/16	5/8	1	7/16	3/8	1	16	2100	1.79
TBEJ008-3	1/2	x 12	1	1 15/16	7/16	5/8	1	7/16	3/8	1	19	2100	2.20
TBEJ010	5/8	x 6	1 3/8	2 1/2	9/16	3/4	1 15/16	1/2	7/16	1 5/16	16	3200	2.53
TBEJ010-2	5/8	x 9	1 3/8	2 1/2	9/16	3/4	1 15/16	1/2	7/16	1 5/16	19	3200	2.99
TBEJ010-3	5/8	x 12	1 3/8	2 1/2	9/16	3/4	1 15/16	1/2	7/16	1 5/16	22	3200	3.68
TBEJ012	3/4	x 6	1 1/2	2 13/16	21/32	15/16	1 1/2	5/8	7/16	1 5/8	17	5000	4.14
TBEJ012-2	3/4	x 9	1 1/2	2 13/16	21/32	15/16	1 1/2	5/8	7/16	1 5/8	20	5000	4.58
TBEJ012-3	3/4	x 12	1 1/2	2 13/16	21/32	15/16	1 1/2	5/8	7/16	1 5/8	23	5000	5.32
TBEJ014	7/8	x 12	1 11/16	3 1/4	3/4	1 1/16	1 3/4	3/4	1/2	1 3/4	25	7000	8.05
TBEJ100	1	x 6	1 13/16	3 9/16	7/8	1 3/16	2	1	5/8	2 1/8	18	10000	8.05
TBEJ100-2	1	x 12	1 13/16	3 9/16	7/8	1 3/16	2	1	5/8	2 1/8	24	10000	11.13



## TURNBUCKLE ASSEMBLIES



**HOOK**



**TURNBUCKLE**

## ASSEMBLY: HOOK & HOOK

Part No.	Turnbuckle		Hook			Overall Closed Length	Rated Capacity (Lbs.)	Unit Weight (Lbs.)
	Thread Dia. A	Take Up T	B	E	F			
TBHH004	1/4	x 4	3/8	1/4	9/32	8 1/4	300	0.25
TBHH005	5/16	x 4 1/2	1/2	5/16	13/32	9 9/16	500	0.44
TBHH006	3/8	x 6	19/32	3/8	17/32	11 7/8	700	0.79
TBHH008	1/2	x 6	13/16	1/2	21/32	13	1040	1.51
TBHH008-2	1/2	x 9	13/16	1/2	21/32	17 1/2	1040	1.81
TBHH008-3	1/2	x 12	13/16	1/2	21/32	20 1/2	1040	2.20
TBHH010	5/8	x 6	7/8	5/8	15/16	16	1600	2.50
TBHH010-2	5/8	x 9	7/8	5/8	15/16	19 1/4	1600	3.00
TBHH010-3	5/8	x 12	7/8	5/8	15/16	21 3/4	1600	3.60
TBHH012	3/4	x 6	1	3/4	31/32	17 3/4	2000	3.90
TBHH012-2	3/4	x 9	1	3/4	31/32	20 3/4	2000	4.60
TBHH012-3	3/4	x 12	1	3/4	31/32	23 3/4	2000	5.30
TBHH014	7/8	x 12	1 1/8	7/8	1 1/4	27 1/4	2400	7.60
TBHH100	1	x 6	1 5/16	1	1 1/4	21 1/4	2900	7.50
TBHH100-2	1	x 12	1 5/16	1	1 1/4	26 5/8	2900	10.00



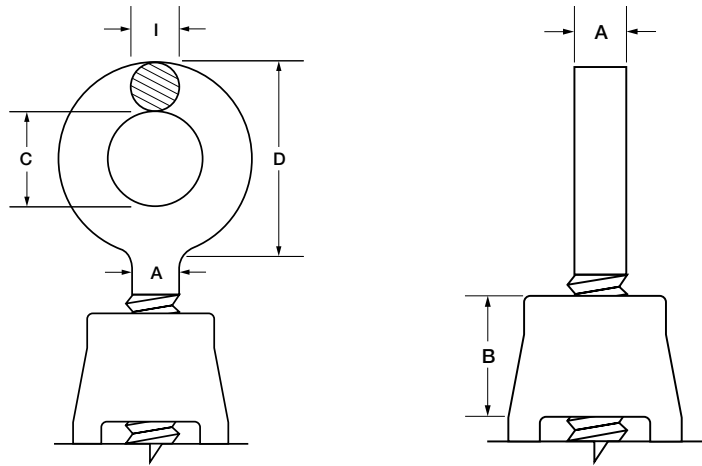
## ASSEMBLY: HOOK & EYE

Part No.	Turnbuckle		Eye			Hook			Overall Closed Length	Rated Capacity (Lbs.)	Unit Weight (Lbs.)
	Thread Dia. A	Take Up T	C	D	I	E	F	B			
TBEH004	1/4	x 4	1/2	1	1/4	1/4	9/32	3/8	8 1/4	300	0.25
TBEH005	5/16	x 4 1/2	5/8	1 1/4	5/16	5/16	13/32	1/2	9 9/16	500	0.44
TBEH006	3/8	x 6	3/4	1 1/2	3/8	3/8	17/32	19/32	11 7/8	700	0.79
TBEH008	1/2	x 6	1	1 15/16	7/16	1/2	21/32	13/16	13	1040	1.51
TBEH008-2	1/2	x 9	1	1 15/16	7/16	1/2	21/32	13/16	17 1/2	1040	1.81
TBEH008-3	1/2	x 12	1	1 15/16	7/16	1/2	21/32	13/16	20 1/2	1040	2.20
TBEH010	5/8	x 6	1 3/8	2 1/2	9/16	5/8	15/16	7/8	16	1600	2.50
TBEH010-2	5/8	x 9	1 3/8	2 1/2	9/16	5/8	15/16	7/8	19 1/4	1600	3.00
TBEH010-3	5/8	x 12	1 3/8	2 1/2	9/16	5/8	15/16	7/8	21 3/4	1600	3.60
TBEH012	3/4	x 6	1 1/2	2 13/16	21/32	3/4	31/32	1	17 3/4	2000	3.90
TBEH012-2	3/4	x 9	1 1/2	2 13/16	21/32	3/4	31/32	1	20 3/4	2000	4.60
TBEH012-3	3/4	x 12	1 1/2	2 13/16	21/32	3/4	31/32	1	23 3/4	2000	5.30
TBEH014	7/8	x 12	1 11/16	3 1/4	3/4	7/8	1 1/4	1 1/8	27 1/4	2400	7.60
TBEH100	1	x 6	1 13/16	3 9/16	7/8	1	1 1/4	1 5/16	21 1/4	2900	7.50
TBEH100-2	1	x 12	1 13/16	3 9/16	7/8	1	1 1/4	1 5/16	26 5/8	2900	10.00



# TURNBUCKLE ASSEMBLIES

**Material:** C-1030  
**Threads:** U.N.C. Class 2A, Right or Left Hand  
**Finish:** Galvanized



**EYE**

**STUB END**

## ASSEMBLY: EYE & EYE



Part No.	Turnbuckle		Eye			Overall Closed Length	Rated Capacity (Lbs.)	Unit Weight (Lbs.)
	Thread Dia. A	Take Up T	C	D	I			
TBEE004	1/4	x 4	1/2	1	1/4	8 1/4	500	0.25
TBEE005	5/16	x 4 1/2	5/8	1 1/4	5/16	9 9/16	800	0.44
TBEE006	3/8	x 6	3/4	1 1/2	3/8	11 7/8	1200	0.79
TBEE008	1/2	x 6	1	1 15/16	7/16	13	2100	1.51
TBEE008-2	1/2	x 9	1	1 15/16	7/16	17 1/2	2100	1.81
TBEE008-3	1/2	x 12	1	1 15/16	7/16	20 1/2	2100	2.20
TBEE010	5/8	x 6	1 3/8	2 1/2	9/16	16	3200	2.50
TBEE010-2	5/8	x 9	1 3/8	2 1/2	9/16	19 1/4	3200	3.00
TBEE010-3	5/8	x 12	1 3/8	2 1/2	9/16	21 3/4	3200	3.60
TBEE012	3/4	x 6	1 1/2	2 13/16	21/32	17 3/4	5000	3.90
TBEE012-2	3/4	x 9	1 1/2	2 13/16	21/32	20 3/4	5000	4.60
TBEE012-3	3/4	x 12	1 1/2	2 13/16	21/32	23 3/4	5000	5.30
TBEE014	7/8	x 12	1 11/16	3 1/4	3/4	27 1/4	7000	7.60
TBEE100	1	x 6	1 13/16	3 9/16	7/8	21 1/4	10000	7.50
TBEE100-2	1	x 12	1 13/16	3 9/16	7/8	26 5/8	10000	10.00

## STUB ENDS



Part No.	Turnbuckle		Overall Closed Length	Nut End B	Length of One Stub (Inches)	Rated Capacity (Lbs.)	Unit Weight (Lbs.)
	Thread Dia. A	Take Up T					
TBA01	3/8	x 6	15 7/8	9/16	8	1200	0.78
TBA03	1/2	x 3	12 7/8	15/16	8	2200	1.38
TBA04	1/2	x 4	13 9/16	25/32	8	2200	1.68
TBA05	1/2	x 6	15 9/16	25/32	8	2200	1.38
TBA06	1/2	x 9	20 3/8	25/32	9 1/2	2200	1.75
TBA07	1/2	x 12	24 9/16	25/32	11	2200	2.25
TBAX8	5/8	x 3	12 7/8	15/16	8	3500	2.14
TBA08	5/8	x 4	13 7/8	15/16	8	3500	2.18
TBA09	5/8	x 6	15 7/8	15/16	8	3500	2.23
TBA10	5/8	x 9	20 3/8	15/16	9 1/2	3500	2.90
TBA11	5/8	x 12	24 7/8	15/16	11	3500	3.20
TBA13	3/4	x 6	16 1/2	1 1/16	8 1/2	5200	3.28
TBA14	3/4	x 9	21 1/8	1 1/16	10	5200	4.05
TBA15	3/4	x 12	25 5/8	1 1/16	11 1/2	5200	4.81
TBA18	7/8	x 6	17 5/8	1 5/16	9	7200	4.50
TBA19	7/8	x 12	26 7/8	1 7/16	12	7200	6.70
TBA21	1	x 6	18 3/8	1 7/16	9 1/2	9300	6.32
TBA22	1	x 12	27 3/8	1 7/16	12 1/2	9300	8.90

