

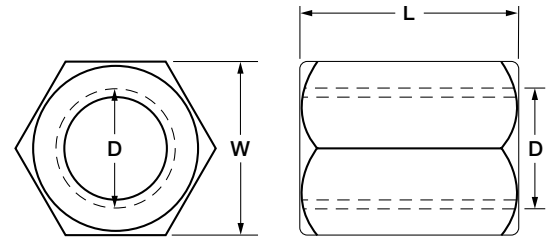
## NUTS: STANDARD COUPLING

**Material:** 12L14 Carbon Steel, Stainless Steel

**Threads:** U.N.C./U.N.F. Class 2B,  
Right or Left Hand

**Finish:** Self-Colored, Galvanized, Plated

**Note:** To 4" Rod Diameter



Part No.	Thread Diameter (Inches) D	x	Length (Inches) L	Width (Inches) W	Unit Weight (Lbs.)
NC006	3/8	x	1 3/4	5/8	0.11
NC008	1/2	x	1 1/4	5/8	0.06
NC010	5/8	x	2 1/8	13/16	0.16
NC012	3/4	x	2 1/4	1	0.28
NC014	7/8	x	2 1/2	1 1/4	0.55
NC100	1	x	2 3/4	1 3/8	0.71
NC102	1 1/8	x	3	1 5/8	1.20
NC104	1 1/4	x	3	1 5/8	0.95
NC106	1 3/8	x	3 3/8	1 7/8	1.44
NC108	1 1/2	x	3 1/5	2	1.87
NC112	1 3/4	x	5	2 3/8	3.60
NC200	2	x	4 1/2	2 3/4	4.50
NC204	2 1/4	x	5	3 1/4	7.40
NC208	2 1/2	x	5 1/2	3 1/2	8.90
NC212	2 3/4	x	6 1/2	4	11.50
NC300	3	x	6 3/4	4	13.80