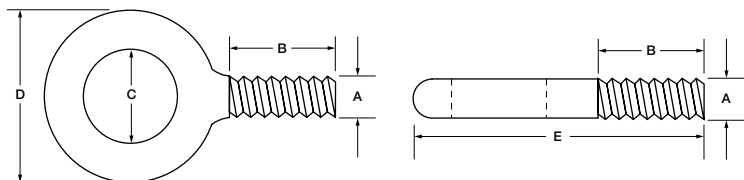


Part No.	A	B	C	D	Reference E	Rated Capacity	Unit Weight (Lbs.)
BEP004	1/4	1	3/4	1 3/16	2.22	500	0.06
BEP005	5/16	1 1/8	7/8	1 7/16	2.60	900	0.11
BEP006	3/8	1 1/4	1	1 21/32	3.00	1300	0.15
BEP007	7/16	1 3/8	1 3/32	1 27/32	3.25	1800	0.21
BEP008	1/2	1 1/2	1 3/16	2 1/16	3.69	2400	0.30
BEP009	9/16	1 5/8	1 9/32	2 9/32	3.93	3000	0.55
BEP010	5/8	1 3/4	1 3/8	2 1/2	4.38	4000	0.61
BEP012	3/4	2	1 1/2	2 13/16	4.88	5000	0.98
BEP014	7/8	2 1/4	1 11/16	3 1/4	5.50	7000	1.53
BEP100	1	2 1/2	1 13/16	3 9/16	6.13	9000	2.06
BEP102	1 1/8	2 3/4	2	4	6.88	12000	2.96
BEP104	1 1/4	3	2 3/16	4 7/16	7.50	15000	4.11
BEP108	1 1/2	3 1/2	2 1/2	5 3/16	8.75	21000	6.73
BEP112	1 3/4	3 3/4	2 7/8	6 1/16	9.81	28000	11.00
BEP200	2	4	3 1/4	6 7/8	11.00	38000	16.25
BEP208	2 1/2	5	4	8 9/16	13.63	56000	28.00



EYEBOLTS: PLAIN

Material: C-1030, Stainless Steel

Threads: U.N.C./U.N.F. Class 2A, Right or Left Hand, Metric

Finish: Self-Colored, Galvanized, Plated, Electro-Polished

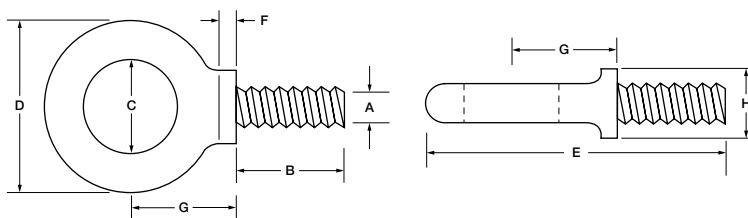
Options: Longer Shank Lengths, Special Threading, Other Alloys

Specifications: IFI Standards ASTM A489, ANSI/ASME B18.15

Note: 2-1/2 Thread Run-Out on Threaded Portion

WARNING: Rated capacity is dramatically reduced when load capacity at any angle. Loading must never be made at an angle greater than 45° from the bolt centerline. Rated capacity is reduced to 25% of the tabulated value at an angle of 45°.

Part No.	A	B	C	D	Reference E	F	G	H	Rated Capacity	Unit Weight (Lbs.)
BES004	1/4	1	3/4	1 3/16	2.38	5/32	13/16	17/32	500	0.06
BES005	5/16	1 1/8	7/8	1 7/16	2.82	11/64	31/32	19/32	900	0.11
BES006	3/8	1 1/4	1	1 21/32	3.28	3/16	1 5/32	11/16	1300	0.18
BES006-001	3/8	3/4	1	1 21/32	2.78	3/16	1 5/32	11/16	1300	0.18
BES006-002	3/8	5/8	1	1 21/32	2.66	3/16	1 5/32	11/16	1300	0.20
BES007	7/16	1 3/8	1 3/32	1 27/32	3.60	13/64	1 5/16	25/32	1800	0.23
BES008	1/2	1 1/2	1 3/16	2 1/16	4.00	7/32	1 7/16	7/8	2400	0.35
BES008-001	1/2	1	1 3/16	2 1/16	3.50	7/32	1 7/16	7/8	2400	0.33
BES009	9/16	1 5/8	1 9/32	2 9/32	4.38	15/64	1 19/32	31/32	3000	0.47
BES010	5/8	1 3/4	1 3/8	2 1/2	4.75	1/4	1 23/32	1 1/16	4000	0.70
BES010-001	5/8	1 1/4	1 3/8	2 1/2	4.25	1/4	1 23/32	1 1/16	4000	0.61
BES012	3/4	2	1 1/2	2 13/16	5.28	5/16	1 29/32	1 1/4	5000	1.10
BES012-001	3/4	1 1/2	1 1/2	2 13/16	4.78	5/16	1 29/32	1 1/4	5000	1.00
BES014	7/8	2 1/4	1 11/16	3 1/4	5.97	3/8	2 3/16	1 7/16	7000	1.70
BES100	1	2 1/2	1 13/16	3 9/16	6.65	13/32	2 13/32	1 9/16	9000	2.36
BES102	1-1/8	2 3/4	2	4	7.53	15/32	2 23/32	1 11/16	12000	3.41
BES104	1-1/4	3	2 3/16	4 7/16	8.22	1/2	2 15/16	1 7/8	15000	4.68
BES108	1-1/2	3 1/2	2 1/2	5 3/16	9.47	9/16	3 7/16	2 3/16	21000	7.77
BES112	1-3/4	3 3/4	2 7/8	6 1/16	10.81	5/8	3 31/32	2 1/2	28000	11.35
BEP200	2	4	3 1/4	6 7/8	11.88	3/4	4 1/2	2 7/8	38000	16.70



EYEBOLTS: SHOULDER

Material: C-1030, Stainless Steel

Threads: U.N.C. Class 2A, Right or Left Hand, Metric

Finish: Self-Colored, Galvanized, Plated, Electro-Polished

Options: Longer Shank Lengths, Special Threading, Other Alloys

Specifications: IFI Standards ASTM A489, ANSI/ASME B18.15

Note: 2-1/2 Thread Run-Out on Threaded Portion

Eyebolts meet ASTM A489, ANSI/ASME B18.15

