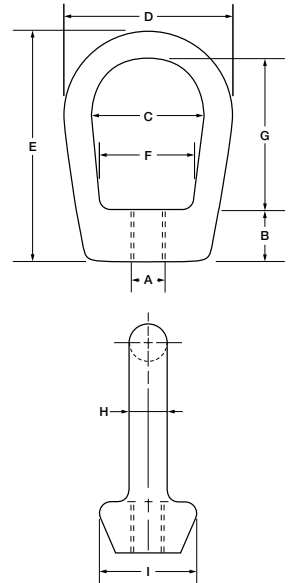




## EYE NUTS

- Material:** C-1030, Stainless Steel  
**Threads:** U.N.C./U.N.F. Class 2B, Right or Left Hand, Metric  
**Finish:** Self-Colored, Galvanized, Plated, Electro-Polished  
**Options:** Other Alloys; Heat Treating, Special Threading  
**Note:** Not Recommended For Lifting.

Part No. Tapped RH	Tap Size A	Bail Size	Thread Length B	I. D. C	O. D. D	Overall Length E	Bell F	I. D. Length G	Bail Thickness H	Shoulder Width I	Rated Capacity (Lbs.)	Unit Weight (Lbs.)
NE05-1	3/8	1/2	5/8	1 1/4	1 3/4	2 1/2	13/16	1 9/16	3/8	31/32	2900	0.26
NE05-2	1/2	1/2	5/8	1 1/4	1 3/4	2 1/2	13/16	1 9/16	3/8	31/32	3500	0.31
NE10-1	3/8	1	11/16	1 1/2	2 1/4	3 3/16	1 3/16	2	1/2	1 3/8	2900	0.63
NE10-2	1/2	1	11/16	1 1/2	2 1/4	3 3/16	1 3/16	2	1/2	1 3/8	5200	0.61
NE10-3	5/8	1	11/16	1 1/2	2 1/4	3 3/16	1 3/16	2	1/2	1 3/8	5500	0.59
NE10-4	3/4	1	11/16	1 1/2	2 1/4	3 3/16	1 3/16	2	1/2	1 3/8	5500	0.56
NE20-1	7/8	2	1	2	3 1/4	4 3/8	1 11/16	2 5/8	3/4	1 15/16	11000	1.72
NE20-2	1	2	1	2	3 1/4	4 3/8	1 11/16	2 5/8	3/4	1 15/16	11000	1.67
NE30-1	1 1/8	3	1 1/4	2 1/2	4 1/4	5 5/8	1 13/16	3 3/8	1	2 3/8	20000	3.64
NE30-2	1 1/4	3	1 1/4	2 1/2	4 1/4	5 5/8	1 13/16	3 3/8	1	2 3/8	20000	3.55
NE30-3	1 1/2	3	1 1/4	2 1/2	4 1/4	5 5/8	1 13/16	3 3/8	1	2 3/8	22000	3.45
NE40-1	1 3/4	4	2 1/4	4	6 1/2	10	4	6 1/4	1 1/2	4	40000	16.57
NE40-2	2	4	2 1/4	4	6 1/2	10	4	6 1/4	1 1/2	4	42000	16.14
NE40-3	2 1/4	4	2 1/4	4	6 1/2	10	4	6 1/4	1 1/2	4	45000	15.62
NE40-4	2 1/2	4	2 1/4	4	6 1/2	10	4	6 1/4	1 1/2	4	52000	15.06



Maximum Working Loads Has Been Estimated With A Safety Factor 5:1