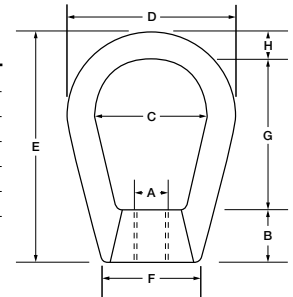


EYE NUTS



- Material:** C-1030, Stainless Steel
Threads: U.N.C. Class 2B, Right or Left Hand, Metric
Finish: Self-Colored, Galvanized, Plated, Electro-Polished
Options: Other Alloys; Heat Treating, Special Threading
Note: Not Recommended For Lifting

Part No. Tapped RH	Tap Size A	Thread Length B	I. D. C	O. D. D	Overall Length E	Bell F	I. D. Length G	Bail Thickness H	Rated Capacity (Lbs.)	Unit Weight (Lbs.)
NES05-01	3/8	5/8	1 1/4	2	2 1/2	7/8	1 1/2	3/8	2700	0.25
NES05-02	1/2	5/8	1 1/4	2	2 1/2	7/8	1 1/2	3/8	2700	0.30
NES10-01	5/8	3/4	1 1/2	2 1/2	3	1 3/8	1 3/4	1/2	5000	0.50
NES10-02	3/4	3/4	1 1/2	2 1/2	3	1 3/8	1 3/4	1/2	5000	0.55
NES20-01	7/8	1	2 1/4	4	5	1 9/16	3	7/8	10000	2.00
NES20-02	1	1	2 1/4	4	5	1 9/16	3	7/8	10000	2.00



Maximum Working Loads Has Been Estimated With A Safety Factor 5:1

