

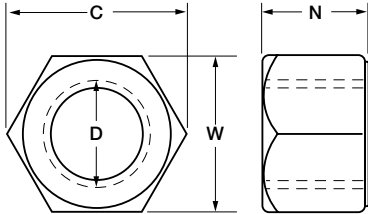
## NUTS: HEAVY HEX

**Material:** ASTM A-563 Carbon Steel,  
Stainless Steel

**Threads:** U.N.C./U.N.F. Class 2B,  
Right or Left Hand

**Finish:** Self-Colored, Galvanized, Plated

**Note:** To 4" Rod Diameter



Part No.	Thread Diameter (Inches) D	Width Across Basic W	Width Across Corner		Thickness Basic N	Weight Per 100
			Min	Max		
NE004	1/4	1/2	0.577	0.556	15/64	1.16
NE005	5/16	9/16	0.650	0.622	19/64	1.72
NE006	3/8	11/16	0.794	0.763	23/64	3.14
NE007	7/16	3/4	0.866	0.830	27/64	4.16
NE008	1/2	7/8	1.010	0.969	31/64	6.54
NE009	9/16	15/16	1.083	1.037	35/64	8.15
NE010	5/8	1 1/16	1.227	1.175	39/64	11.90
NE012	3/4	1 1/4	1.443	1.382	47/64	19.30
NE014	7/8	1 7/16	1.660	1.589	55/64	29.70
NE100	1	1 5/8	1.876	1.796	63/64	42.50
NE102	1 1/8	1 13/16	2.093	2.002	1 7/64	59.20
NE104	1 1/4	2	2.309	2.209	1 7/32	78.60
NE106	1 3/8	2 3/16	2.526	2.416	1 11/32	102
NE108	1 1/2	2 3/8	2.742	2.622	1 15/32	131
NE110	1 5/8	2 9/16	2.959	2.828	1 19/32	162
NE112	1 3/4	2 3/4	3.175	3.035	1 23/32	204
NE114	1 7/8	2 15/16	3.392	3.242	1 27/32	241
NE200	2	3 1/8	3.608	3.449	1 31/32	299
NE204	2 1/4	3 1/2	4.041	3.862	2 13/64	419
NE208	2 1/2	3 7/8	4.474	4.275	2 29/64	564
NE212	2 3/4	4 1/4	4.907	4.688	2 45/64	738
NE300	3	4 5/8	5.340	5.102	2 61/64	950
NE304	3 1/4	5	5.774	5.515	3 3/16	950
NE305	3 1/2	5 3/8	6.207	5.928	3 7/64	1526
NE312	3 3/4	5 3/4	6.640	6.341	3 11/64	1526
NE400	4	6 1/8	7.073	6.755	3 15/16	2180