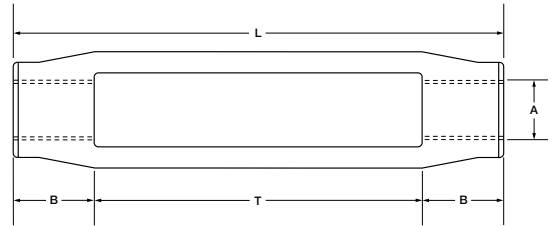


# TURNBUCKLES

Part No.	Thread Diameter (Inches)		Take Up T	Body Length (Inches) L	Nut End B	Rated Capacity (Lbs.)	Unit Weight (Lbs.)
	A	x					
<b>TB01</b>	3/8	x	6	7 1/8	9/16	1200	0.42
<b>TB03</b>	1/2	x	3	4 7/8	15/16	2200	0.56
<b>TB04</b>	1/2	x	4	5 9/16	25/32	2200	0.85
<b>TB05</b>	1/2	x	6	7 9/16	25/32	2200	0.65
<b>TB06</b>	1/2	x	9	10 9/16	25/32	2200	0.90
<b>TB07</b>	1/2	x	12	13 9/16	25/32	2200	1.20
<b>TBX8</b>	5/8	x	3	4 7/8	15/16	3500	0.56
<b>TB08</b>	5/8	x	4	5 7/8	15/16	3500	0.82
<b>TB09</b>	5/8	x	6	7 7/8	15/16	3500	0.98
<b>TB10</b>	5/8	x	9	10 7/8	15/16	3500	1.84
<b>TB11</b>	5/8	x	12	13 7/8	15/16	3500	2.35
<b>TB13</b>	3/4	x	6	8 1/8	1 1/16	5200	1.45
<b>TB14</b>	3/4	x	9	11 1/8	1 1/16	5200	1.84
<b>TB15</b>	3/4	x	12	14 1/8	1 1/16	5200	2.35
<b>TB18</b>	7/8	x	6	8 5/8	1 5/16	7200	1.85
<b>TB19</b>	7/8	x	12	14 7/8	1 7/16	7200	4.00
<b>TB21</b>	1	x	6	8 7/8	1 7/16	9300	2.60
<b>TB22</b>	1	x	12	14 7/8	1 7/16	9300	4.02
<b>TB26</b>	1 1/8	x	6	9 1/8	1 9/16	11600	4.06
<b>TB27</b>	1 1/8	x	12	15 1/8	1 9/16	15200	9.74
<b>TB29</b>	1 1/4	x	6	9 1/8	1 9/16	15200	4.00
<b>TB30</b>	1 1/4	x	12	15 1/8	1 9/16	15200	9.74
<b>TB33</b>	1 3/8	x	6	9 5/8	1 13/16	17400	6.15
<b>TB34</b>	1 3/8	x	12	15 3/4	1 7/8	17400	9.70
<b>TB35</b>	1 1/2	x	6	9 3/4	1 7/8	21000	6.15
<b>TB36</b>	1 1/2	x	12	15 3/4	1 7/8	21000	9.74
<b>TB39</b>	1 5/8	x	6	11	2 1/2	24500	9.80
<b>TB40</b>	1 5/8	x	12	17 1/2	2 3/4	26000	15.25
<b>TB41</b>	1 3/4	x	6	11	2 1/2	28000	9.80
<b>TB42</b>	1 3/4	x	12	17	2 1/2	28000	15.25
<b>TB45</b>	1 7/8	x	6	11 5/8	2 13/16	37000	14.00
<b>TB46</b>	1 7/8	x	12	17 1/2	2 3/4	37000	15.25
<b>TB49</b>	2	x	6	11 5/8	2 13/16	37000	14.00
<b>TB50</b>	2	x	12	17 1/2	2 3/4	37000	15.25
<b>TB53</b>	2 1/4	x	6	12 5/8	3 5/16	48000	19.60
<b>TB54</b>	2 1/4	x	12	19 5/8	3 13/16	48000	30.92
<b>TB57</b>	2 3/8	x	6	13 1/2	3 3/4	52500	23.25
<b>TB58</b>	2 1/2	x	6	13 1/2	3 3/4	60000	23.25
<b>TB59</b>	2 1/2	x	12	19 1/2	3 3/4	60000	30.92
<b>TB63</b>	2 3/4	x	6	14 3/8	4 3/16	75000	31.50
<b>TB65</b>	2 3/4	x	12	22 1/2	5 1/4	79000	60.50
<b>TB67</b>	2 7/8	x	6	14 3/4	4 3/8	79400	39.50
<b>TB68</b>	3	x	6	14 5/8	4 5/16	96700	39.50
<b>TB70</b>	3	x	12	22 1/2	5 1/4	100000	60.50
<b>TB80</b>	3 1/4	x	6	16 7/8	5 7/16	104000	60.50
<b>TB82</b>	3 1/4	x	12	22 1/2	5 1/4	104000	60.50
<b>TB85</b>	3 1/2	x	6	16 7/8	5 7/16	122200	60.50
<b>TB87</b>	3 1/2	x	12	22 1/2	5 1/4	122200	60.50
<b>TB88</b>	3 3/4	x	6	18	6	167800	95.00
<b>TB93</b>	4	x	6	18	6	167800	95.00
<b>TB98</b>	4 1/2	x	9	22 1/2	6 3/4	233800	152.00

**Material:** C-1035, SA-182-F-11, Stainless Steel  
**Threads:** U.N.C./U.N.F. Class 2B, Right or Left Hand, Metric  
**Finish:** Self-Colored, Galvanized, Plated, Electro-Polished  
**Options:** Other Alloys; Heat Treating, Special Threading



Sizes 3/8" to 1 3/4"



Sizes 1 7/8" to 4 1/2"