

WIRE ROPE FITTINGS

MALLEABLE WIRE ROPE CLIPS

Material: 1030 Carbon Steel

Finish: Zinc Plated



- All regular hex nuts
- Clips meet Federal specification FF-C 450, Type 1, Class 2
- Bulk pack

Stock No.	Rope Size	Inside Length of U-Bolt	Min. No. of Clips for Max. Strength	Approx. Wt. Per 100 Pcs.
MWC003220-0001	3/16	15/16	2-4	6.5
MWC004220-0001	1/4	1 1/32	2-4	12.0
MWC005220-0001	5/16	1 5/16	2-4	12.0
MWC006220-0001	3/8	1 1/2	2-4	19.0
MWC007220-0001	7/16	1 7/8	3-4	21.8
MWC008220-0001	1/2	1 7/8	3-4	37.0
MWC009220-0001	9/16	2 1/4	3-4	46.0
MWC010220-0001	5/8	2 3/8	3-4	54.0
MWC012220-0001	3/4	2 3/4	4-5	80.0
MWC014220-0001	7/8	3 1/8	4-5	116.0
MWC100220-0001	1	3 1/2	4-5	137.0
MWC102220-0001	1-1/8	3 7/8	6-8	267.0
MWC104220-0001	1-1/4	4 1/4	6-8	328.0

USE CLIPS PROPERLY FOR MAXIMUM EFFICIENCY

1. U-bolt should bear on dead end of rope.
2. Use recommended number of clips, depending on safety requirement.
3. Spacing between clips should be 6 times the rope diameter.
4. Nuts should be retightened after initial load.

WIRE ROPE FITTINGS

FORGED WIRE ROPE CLIPS

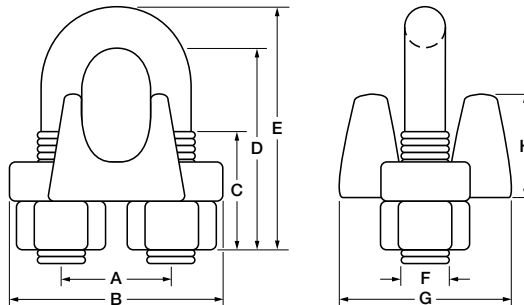
Material: Forged Carbon and Stainless Steel

Finish: Self-Colored and Hot Dip Galvanized



Stock No.	Size for Rope Dia.	Dimensions									Min. No. Clips for Max. Strength	Min. Spacing Between Clips	Approx. Wt. Per 100 Pcs.
		A	B	C	D	E	F	G	H				
FWC003210-0001	3/16	19/32	1 3/32	5/8	31/32	1 3/16	1/4	15/16	1/2	2	1 1/8	9.0	
FWC004210-0001	1/4	11/16	1 7/16	7/8	1 7/32	1 1/2	5/16	1 1/8	11/16	2	1 1/2	18.0	
FWC005210-0001	5/16	7/8	1 11/16	1	1 5/8	1 31/32	3/8	1 5/16	3/4	2	1 7/8	30.0	
FWC006210-0001	3/8	1	1 15/16	7/8	1 5/8	2	7/16	1 1/2	7/8	2	2 1/4	44.5	
FWC008210-0001	1/2	1 3/16	2 1/4	1 1/16	1 29/32	2 5/16	1/2	1 13/16	1 3/32	3	3	71.6	
FWC010210-0001	5/8	1 1/4	2 3/8	1 7/16	2 3/8	2 7/8	9/16	2 1/16	1 1/4	3	3 3/4	100.0	
FWC012210-0001	3/4	1 1/2	2 3/4	1 1/2	2 13/16	3 3/8	5/8	2 5/16	1 15/32	4	4 1/2	140.0	
FWC014210-0001	7/8	1 3/4	3 3/16	1 7/8	3 1/8	3 7/8	3/4	2 7/16	1 1/2	4	5 1/4	200.0	
FWC100210-0001	1	1 7/8	3 1/2	2 1/4	3 1/2	4 1/4	3/4	2 11/16	1 3/4	5	6	245.0	
FWC102210-0001	1-1/8	2 1/16	3 11/16	2 3/16	3 7/8	4 5/8	3/4	3	2	6	6 3/4	285.0	
FWC104210-0001	1-1/4	2 3/16	4 1/16	2 3/8	4 1/4	5 1/8	7/8	3 1/4	2 5/32	6	7 1/2	415.0	
FWC108210-0001	1-1/2	2 19/32	4 1/2	2 7/16	5	5 7/8	7/8	3 3/8	2 13/32	7	9	534.0	

*1/8 only is supplied with regular hex nut and zinc plated U-bolt.



WIRE ROPE FITTINGS

HEAVY WIRE ROPE THIMBLES

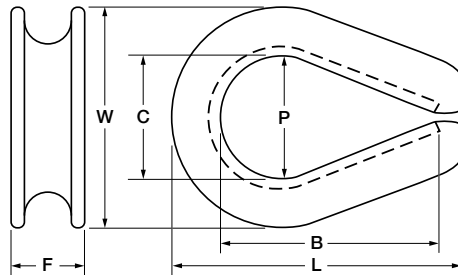
Material: 1030 Carbon and Stainless Steel

Finish: Self-Colored and Hot Dip Galvanized



Heavy Duty Stock No.	Regular Stock No.	Size Rope Dia.	Dimensions						Max. Pin Dia. P	W	Approx. Wt. Per 100 Pcs.
			B	C	F	L					
WRT003210-0001	WRT003210-0002	3/16									
WRT004210-0001	WRT004210-0002	1/4	1 11/16	7/8	7/16	2 1/4	13/16	1 1/2	9.0		
WRT005210-0001	WRT005210-0002	5/16	2	1 1/16	17/32	2 5/8	1	1 7/8	13.5		
WRT006210-0001	WRT006210-0002	3/8	2 1/8	1 1/8	21/32	2 3/4	1 1/16	2	26.0		
WRT007210-0001	WRT007210-0002	7/16	2 1/4	1 1/4	3/4	3 1/16	1 3/16	2 1/4	31.0		
WRT008210-0001	WRT008210-0002	1/2	2 3/4	1 1/2	7/8	3 3/4	1 7/16	2 7/8	43.0		
WRT010210-0001	WRT010210-0002	5/8	3 1/4	1 3/4	1 1/32	4 3/16	1 5/8	3	76.0		
WRT012210-0001	WRT012210-0002	3/4	3 3/4	2	1 1/4	5	1 7/8	3 3/4	142.5		
WRT014210-0001	WRT014210-0002	7/8	4 1/4	2 1/4	1 7/16	5 11/16	2 1/8	4 1/8	189.0		
WRT100210-0001	WRT100210-0002	1	4 7/8	2 11/16	1 5/8	6 7/16	2 1/2	4 15/16	280.0		
WRT102210-0001	WRT102210-0002	1-1/8	5 1/4	2 15/16	1 7/8	7 1/4	2 3/4	5 7/16	402.0		
WRT104210-0001	WRT104210-0002	1-1/4	5 1/4	2 15/16	1 7/8	7 1/4	2 3/4	5 7/16	402.0		

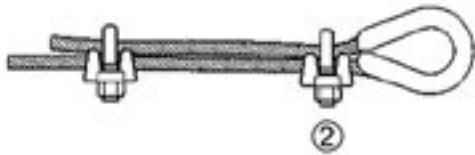
A heavy thimble with deep score, made from heavy gauge steel. Designed to withstand the crushing strains imposed by severe loads. Hot-dip galvanized in accordance with ASTM Specification A 153 for maximum corrosion protection. All sizes meet or exceed Federal Specification FF-T-276b for Type III thimbles.



How To Attach Wire Rope Clips

When attaching wire rope clips the base or saddle should bear on the live end of the rope — U-bolt on the short or dead end. Staggering or reversing the clips does NOT give additional holding power.

1. ATTACH FIRST CLIP one base width from dead end of rope. Tighten nuts securely.
2. ATTACH SECOND CLIP as close to loop as possible. Tighten nuts firmly but not completely tight.
3. ATTACH ALL OTHER CLIPS (if required) equally spaced between the first two. Tighten nuts firmly.



CAUTION

Apply the initial load to the rope. Alternately and uniformly retighten all nuts securely, to compensate for any reduction of rope diameter. Inspect and periodically retighten. The number of clips shown should be used for 6x19 or 6x37 class, fiber core or IWRC, IPS or XIPS, right regular or long way Wire Rope, and 8x19 or 8x7 class, fiber core, IPS or XIPS, Wire Rope.

For 6x19 Seale construction or similar large outer wire constructions, add one extra clip for sizes 1" and larger. Where service conditions are unusually severe, or for other classes of rope not mentioned above, add one additional clip.

Drop Forged Wire Rope Clips, when properly applied to new rope will develop high efficiencies (approximately 80%) based upon the catalog breaking strength of the wire rope. Failure to follow the above instructions will cause a reduction in efficiency.

