

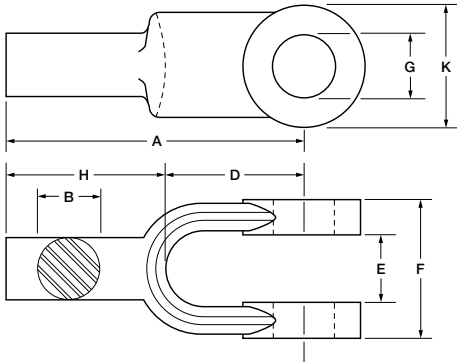
YOKE ENDS: PLAIN

Material: C-1030

Threads: U.N.C. / U.N.F. Class 2A, Right or Left Hand

Finish: Self-Colored, Plated

Options: Special Machining and Threading



Part No.	Dimensions In Inches								Unit Weight (Lbs.)
	A	B	D	E	F	G	H	K	
YP004	1 3/4	1/4	5/8	9/32	5/8	1/4	1 1/8	1/2	0.05
YP005	2	5/16	3/4	11/32	3/4	5/16	1 1/4	19/32	0.08
YP006	2 1/8	3/8	27/32	7/16	7/8	3/8	1 9/32	11/16	0.11
YP007	2 1/4	7/16	1	1/2	1	7/16	1 1/4	13/16	0.18
YP008	2 1/2	1/2	1 1/8	9/16	1 1/8	1/2	1 3/8	15/16	0.24
YP010	2 7/8	5/8	1 7/16	11/16	1 3/8	5/8	1 7/16	1 3/16	0.46
YP012	3 5/8	3/4	1 11/16	13/16	1 5/8	3/4	1 15/16	1 7/16	1.15
YP014	4	7/8	2	15/16	1 7/8	7/8	2	1 11/16	1.25
YP100	6	1	2 1/2	1 1/16	2 1/8	1	3 1/2	1 15/16	3.4



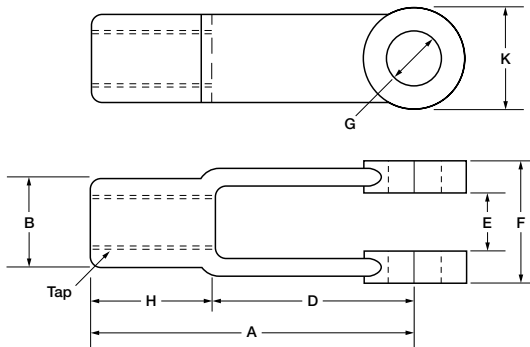
YOKE ENDS: ADJUSTABLE

Material: C-1030

Threads: U.N.C. / U.N.F. Class 2B, Right or Left Hand

Finish: Self-Colored, Plated

Options: Special Machining and Threading



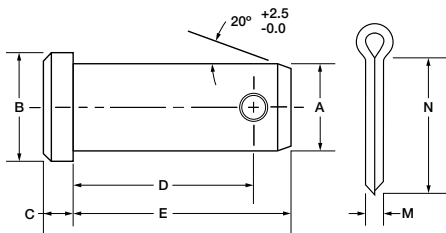
Part No.	Dimensions In Inches								Tap Thread	Unit Weight (Lbs.)
	A	B	D	E	F	G	H	K		
YA004	2	7/16	1 1/4	9/32	5/8	1/4	3/4	1/2	1/4	0.07
YA005	2 1/4	1/2	1 7/16	11/32	3/4	5/16	13/16	19/32	5/16	0.11
YA006	2 1/2	5/8	1 5/8	7/16	7/8	3/8	7/8	11/16	3/8	0.17
YA007	2 7/8	23/32	1 7/8	1/2	1	7/16	1	13/16	7/16	0.24
YA008	3	13/16	1 7/8	9/16	1 1/8	1/2	1 1/8	15/16	1/2	0.39
YA010	4 15/16	1 1/16	3 11/16	11/16	1 3/8	5/8	1 1/4	1 3/16	5/8	0.85
YA012	6 1/16	1 1/4	4 9/16	13/16	1 5/8	3/4	1 1/2	1 7/16	3/4	1.15



YOKE PINS

Material: C-1030

Finish: Self-Colored, Plated



Part No.	Dimensions In Inches						Cotter Pin		Unit Weight (Lbs.)
	A	B	C	Min. D	E	F	M	N	
PY004	1/4	3/8	3/32	43/64	49/64	55/64	1/16	7/16	0.02
PY005	5/16	7/16	3/32	13/16	15/16	1 1/32	3/32	1/2	0.03
PY006	3/8	1/2	1/8	15/16	1 1/16	1 3/16	3/32	5/8	0.04
PY007	7/16	9/16	5/32	1 1/16	1 3/16	1 11/32	3/32	3/4	0.06
PY008	1/2	5/8	5/32	1 13/64	1 23/64	1 33/64	1/8	7/8	0.09
PY010	5/8	13/16	13/64	1 29/64	1 39/64	1 13/16	1/8	1	1.75
PY012	3/4	15/16	1/4	1 23/32	1 29/32	2 5/32	5/32	1 1/4	3.00

